

ERA22LA123

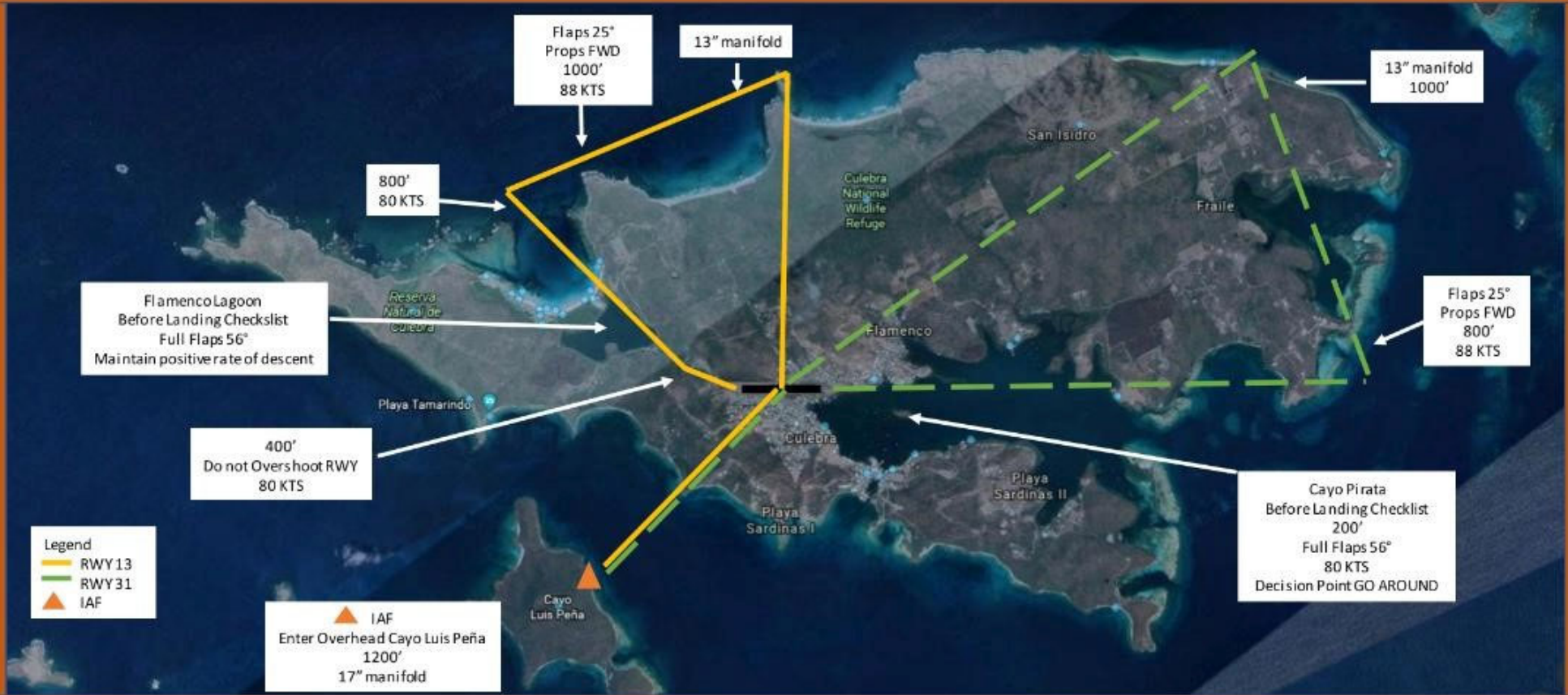
# **AIRWORTHINESS**

Group Chair's Factual Report - Attachment 1

CPX Training Materials

December 22, 2022

# Overhead Pattern Entry Landing RWY 13 - 31



**BN-2A / BN-2B**

**For Day Operations**  
Not to Scale

# Take off and Initial Climb RWY 13



## Notes:

1. Midfield departures are prohibited.
2. Do not Overfly the Town area of Dewey right after departure unless its required to avoid weather.
3. Take off out of RWY 31 is prohibited.

BN-2A / BN-2B

Not to Scale

## Landing RWY 13

Before Landing Checklist  
Full Flaps 56°  
Recommended App.  
Speed  
80 KTS

400'  
80 KTS  
Recommended App.  
Speed  
Do not Overshoot RWY

1300 ft

Iglesia Alianza Cristiana  
y Misionera Culebra

Benjamin  
Rivera Noriega  
Airports



**Notes: If you do not land in the first 1,300 feet of RWY 13 or you are above 80 kts Go Around Procedure must be executed. Turbulence may be Experienced when the wind is from the north.**

### BN-2A / BN-2B

Not to Scale

## Landing RWY 13



-  1300 FT of RWY
-  Recommended Touchdown Area

**1,300 FT**  
**BN-2A/BN-2B**  
**BN-2A-MK III**

**Notes: If you do not land in the first 1,300 feet of  
RWY 13 or you are above 80 kts  
Go Around Procedure must be executed**